

Country Porch Specification Package.

- 1) These plans are for conceptual and bidding purposes only.
- 2) These plans cannot be used to apply for a building permit.
- 3) All design information must be approved by your local architect and engineer.
- 4) The material list is not guaranteed to be accurate based on your individual situation, other material may be needed.
- 5) These plans cannot be used to build your addition.
- 6) Your contractor/architect will be responsible for confirming the accuracy of the drawings and the material list.

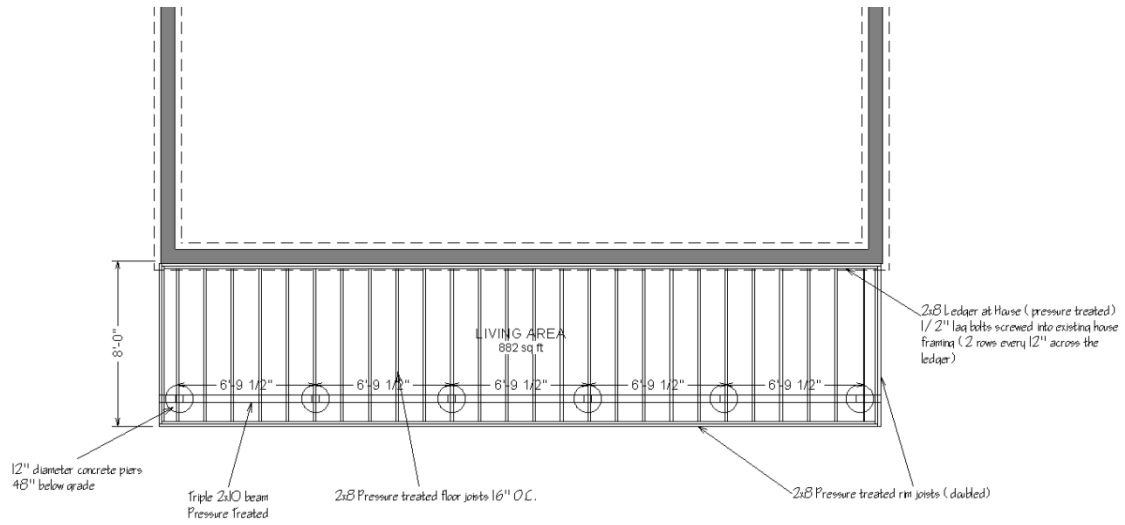
What this Specification Package can be used for:

- 1) You can use this package to expedite contractor bids, because each contractor is getting the same specification sheet; you can truly compare pricing
- 2) You can change the overall dimensions of this package by simply penciling it in.
- 3) You use this package to get material estimates.
- 4) You can use this package to be your own general contractor, and get bids for each stage of the project.
- 5) You can use this package to approach an architect, and present to him (her) the concept you are looking to build.

Initial Estimate Sheet

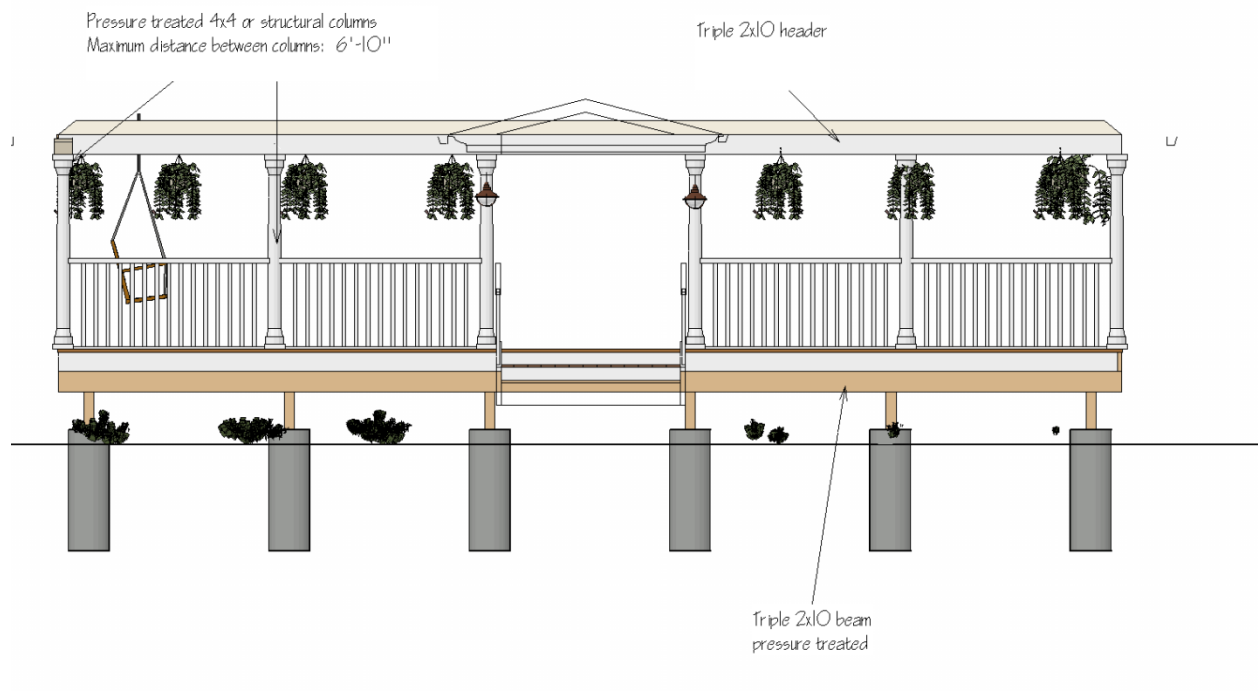
We have provided you with an initial estimate sheet. This sheet should be filed out by you, and your contractor(s) on the day of the initial estimate. By filling this sheet out together, you will be on the same page with each contractor you meet with. Every contractor who provides you with an estimate should return the sheet with the grand total for your project.





Floor Framing Plan





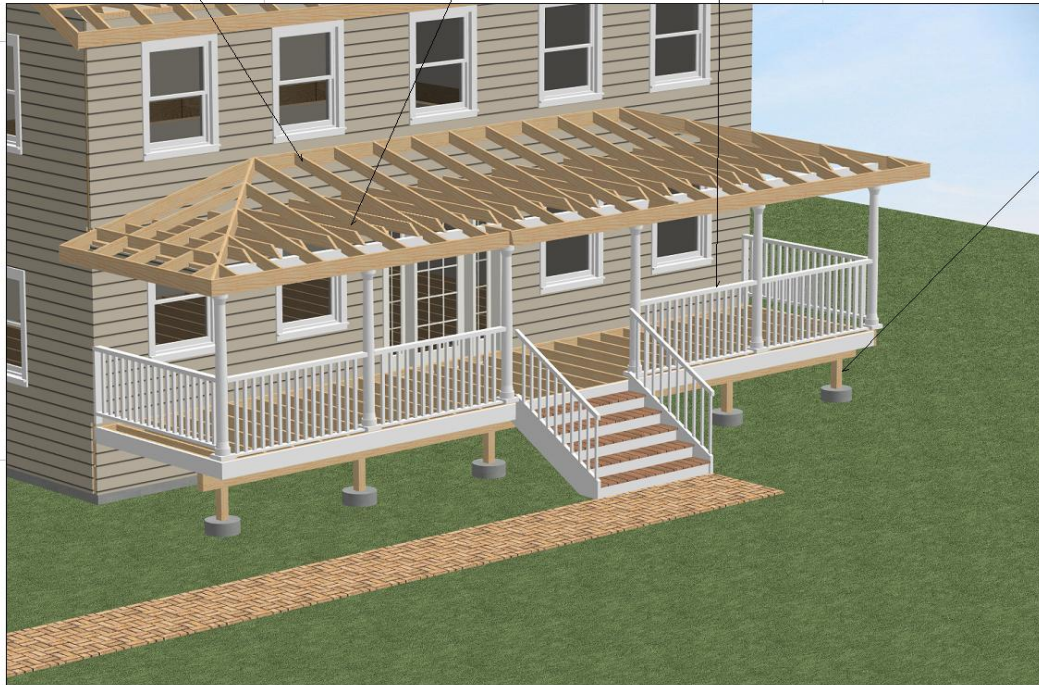
Front cross section view

2x6 roof rafter 16" O.C.

2x6 ceiling joist 16" O.C.

Vinyl Railings

4x4 post
pressure treated



Framing overview

This Material List is based on a 8'x35' size floor plan. Depending on your size this table will need to be modified.

Floor system:	Item	Size	Length	QTY	Note
	Floor joist	2x8	8'	35	Pressure treated
	Rim Joist	2x8	20'	7	Pressure treated
	Deck plank	1x6	16'	40	Pressure treated
	Post	4x4	8'	11	Pressure treated
	Beam	2x10	16'	12	Pressure treated
	Stair Stringer	2x12	8'	2	Pressure treated
	Joist Hangers	2x8		28	

Roof:	Item	Length	QTY	Note
	Ceiling joist	2x6	10'	DougFir
	Rafter	2x6	8'	DougFir
	Roofing plywood	4x8x1/2	14	CDX
	Fascia	2x6	16'	DougFir

	Item	Description	Length	QTY
Misc:	Railings	Vinyl sections	8'	8
	Columns	Vinyl/Fiberglass	8'	6
	Lag bolts	Lag bolts/washers	8"	40
	Roof shingles	Architectural		4 Squares
	Tar paper	15# organic felt		2 rolls
	Water/Ice			1 roll
	Quickcrete	80# bags		24
	12" sonotubes		48"	6
	Vinyl lattice	4x8 sheets		10