

# This is a Proposal to build an In-Law addition for Mr. and Mrs. Markham



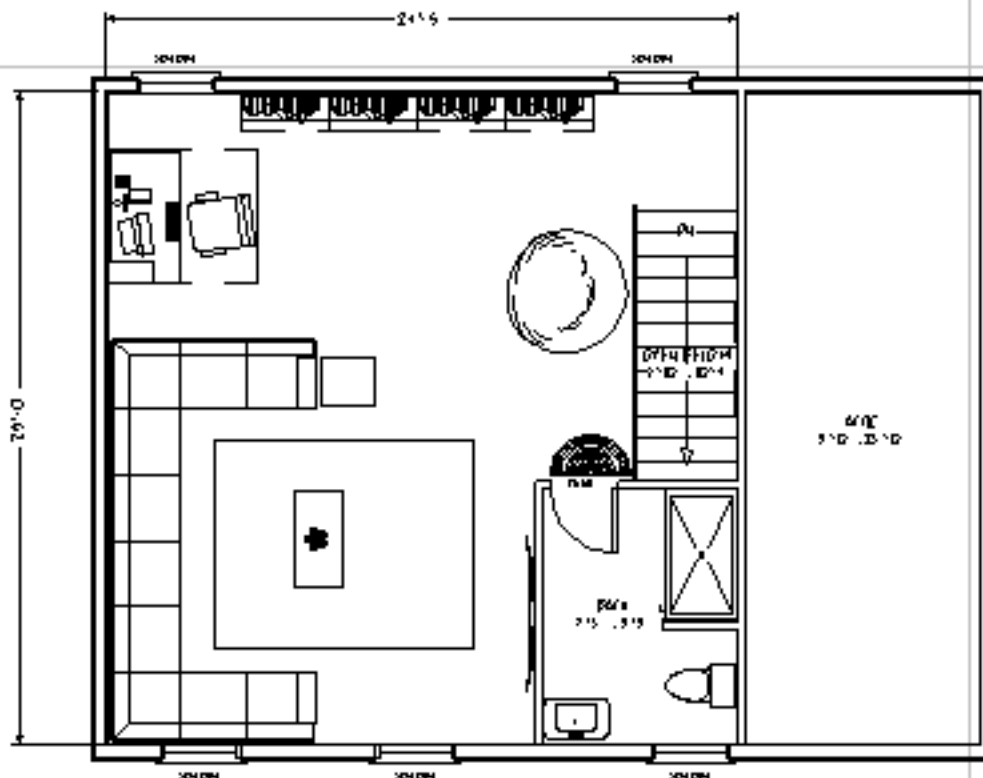
Option 1



Option 2



Option 3



Plan Views for options 2 and 3

1 AUG 04/06  
402... 1



### Project Description:

The proposal is based on a three-level-in-law addition to the existing house with four units. A two-car garage for the addition has been added to provide access to the second floor. The second floor will be used as a two-car garage. All bedrooms will be added to the second floor. The addition will be used to house the in-law addition. The addition will be located above the addition in the back of additional unit and features to include the view shown are included.

### General Notes:

- Finish of architectural details included
- Finish of kitchen included
- Finish of bathroom included
- Finish of living area included
- Finish of bedroom included
- Finish of stairs included
- Finish of porch included
- Finish of driveway included
- Finish of garage included
- Finish of roof included
- Finish of foundation included
- Finish of exterior walls included
- Finish of interior walls included
- Finish of ceiling included
- Finish of floor included
- Finish of paint included
- Finish of landscaping included
- Finish of site work included
- Finish of utility work included
- Finish of mechanical work included
- Finish of electrical work included
- Finish of plumbing work included
- Finish of HVAC work included
- Finish of fire alarm work included
- Finish of security work included
- Finish of other work included

### Material:

- 22 Gauge Galvalume
- Galvalume and other materials
- Galvalume and other materials
- Galvalume and other materials
- Galvalume and other materials
- Galvalume and other materials

### Paint:

- Stone and limestone paint - \$1000
- White and black paint - \$600
- Galvalume paint - \$250
- Galvalume paint - \$500 per square foot

### Roofing:

- Two-car garage - 2000 sq ft
- Two-car garage - 2000 sq ft
- Two-car garage - 2000 sq ft
- Two-car garage - 2000 sq ft

### Roofing:

- Two-car garage - 2000 sq ft
- Two-car garage - 2000 sq ft
- Two-car garage - 2000 sq ft
- Two-car garage - 2000 sq ft

### Interior Finish:

- Galvalume and other materials
- Galvalume and other materials
- Galvalume and other materials
- Galvalume and other materials

Total cost for the addition as described and shown for options 2 and 3: \$155,560.  
Total cost for the addition as described and shown for option 1: \$155,180.



Rear View with addition

Note: Distribution of this material is strictly prohibited and is punishable by law, any use of this material must be approved by Simply Additions.

Formulas For Perfect Homes

www.SimplyAdditions.com  
Toll Free: 1-877-Simply-1 Local: 860-436-2192  
**SIMPLY**  
  
**ADDITIONS**  
email: McCreesh@SimplyAdditions.com  
75 Hockwell Rd - Newington, CT

This is a proposed addition designed by Simply Additions, this proposal is to be used as a visual guide for you to envision the type of project available for the price given. This is not a final design and the dimensions may change during the actual development of architectural plans.

1 Hickory Lane,  
Darien CT

Date  
3/28/2009